

DEMO

# ETM-36-135-F

Mercedes-Benz Sprinter 316

3,5t

Chassis mounted Medium Duty series aerial access platform with TIME Smartbox toolbox with 4 doors on the chassis



**REQUEST A QUOTE**  
+45 9863 2433 or [sales@TIMEintl.dk](mailto:sales@TIMEintl.dk)

## SPECIFICATIONS

3 / 5° max slope

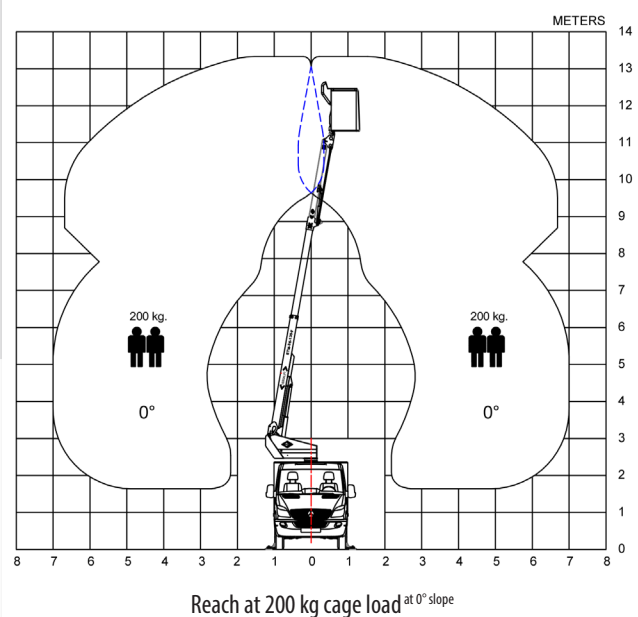
Working height:	13,3 m
Outreach: at 0° slope	7,0 m
Cage capacity:	200 kg
GVW:	3500 kg
Flyboom:	90°
Wheelbase:	3665 mm
Insulation:	1 kV
Vehicle ID:	#9046

Subject to change without notice

## FEATURES

A-frame outriggers. 2 man Eco cage with door, flash and electrical outlet. Shortened rear platform with flash. Flash on turret. Flash on top of vehicle. IPC: Dual inlet controls with 2 joysticks. Lower controls. Patented Axle locking system. TIME Smartbox with vertical 4 doors (manual). Ability to work in a limited work area (without outriggers).

## REACH DIAGRAM



Time International A/S - Søndervang 3 - DK9640 Farsø  
Phone +45 98632433 - Fax +45 9863 2483  
[sales@TIMEintl.dk](mailto:sales@TIMEintl.dk) - [www.TIMEintl.dk](http://www.TIMEintl.dk)

DEMO/9046/ETM-36-135-F/2014/03/UK

DEMO

# ETM-36-135-F

## Mercedes-Benz Sprinter 316

3,5t

Chassis mounted Medium Duty series aerial access platform with TIME Smartbox toolbox with 4 doors on the chassis



### SELECTED FEATURES



TIME Smartbox on chassis with 4 manually opened vertical doors



A-frame outriggers



Shortened rear platform with flash



2 man Eco cage with door, flash and electrical outlet



Lower controls



IPC: Dual inlet controls with 2 joysticks